

Non-Profit Org.
U.S. Postage
PAID
Permit No.

**CHAMBER MUSIC CAMP
WITH THE AMELIA TRIO**

JULY 2-16, 2010

PLEASE OPEN AND POST

**AMELIA PIANO TRIO
DIRECTORS**

www.greenlakechambermusiccamp.com



CHAMBER MUSIC CAMP

GREEN LAKE FESTIVAL OF MUSIC

WIDEN YOUR HORIZONS

The Amelia Piano Trio, one of America's top young ensembles, has created a student experience that is truly one of a kind. Their world-class musicianship and dynamic and fun-loving personalities are combined with genuine caring for each student.

FACULTY AND GUEST ARTISTS

See bios on inside of brochure.

CURRICULUM

- » Private lessons with faculty and solo master classes with major artists:
 - Eric Zuber, Pianist, *2007 Hilton Head International Piano Competition Winner*
 - Jennifer Koh, Violinist, *Tchaikovsky International Violin Competition Winner*
 - Thomas Rosenberg, Cellist, *Artistic Director, Fischoff National Chamber Music Competition*

- » Daily one-on-one coachings with faculty and guest artists
- » Multiple master classes and community performance opportunities
- » Chamber Orchestra with the faculty
- » Sightreading sessions

SPECIAL FEATURES

- » Tickets to professional concerts by the Amelia Piano Trio, 2007 Hilton Head International Piano Competition Winner Eric Zuber, Tchaikovsky International Violin Competition Winner Jennifer Koh, and Le Vent Du Nord, Canadian Celtic Ensemble

TWO PUBLIC STUDENT PERFORMANCES AS PART OF THE GREEN LAKE FESTIVAL CONCERT SERIES

- » "A Circle of Sound" student/faculty in the round orchestra concert in the Boston Barn.
- » Final Chamber Extravaganza concert in the historic Thrasher Opera House

RECREATION AND FUN

- » 4th of July Fireworks
- » Expand your food horizons: international dinner cooked by the faculty at the Boston Farm
- » Access to Ripon College recreational facilities

HOUSING AND FACILITIES

The camp is based at Ripon College. Students are housed in college dorms.



ELIGIBILITY

High school, college, and graduate strings and pianists individually or in pre-formed groups

FEES, APPLICATION FORMS AND SCHOLARSHIP INFORMATION

Visit www.greenlakechambermusiccamp.com or call the Festival office at 1-800-662-7097

Live auditions will also be scheduled. Check the website for information.

DEADLINES

- » Enrollment is limited; early application strongly encouraged
- » Earlybird special: 10% discount if application received by February 15 and fees paid in full within 30 days of acceptance
- » Applications received after February 15 will be reviewed in the order received until all positions are filled.

QUESTIONS?

Visit www.greenlakechambermusiccamp.com; call the Festival office at 1-800-662-7097, or email anthea@ameliapianotrio.com

CONTINUED »

VIOLIN

ANTHEA KRESTON

Faculty, Hartt School of Music

Violinist, Amelia Piano Trio

Violinist Anthea Kreston has received numerous awards for her chamber collaborations including honors at the Meibourne and Banft International Competitions, the Top Prize in the Munich ARD International Chamber Music Competition. The San Diego Reader said of her



SAMANTHA GEORGE

Former Associate Concertmaster, Milwaukee Symphony, Soloist

Associate Professor, Lawrence Conservatory of Music

Samantha George, a member of the Milwaukee



Master of Music and Performer's Certificate degrees from the University in Appleton, WI, holding a Bachelor of Music, currently a Visiting Assistant Professor at Lawrence

MATHIAS TACKKE

Vermeer Quartet, Professor of Violin NIU

Mathias Tackke was the second violinist of the Vermeer Quartet. Originally from Bremen, Germany, he studied with Ernst Mayer-Schiering in Detmold, with Emanuel Hurwitz and David Tackano in London, and with Sander Vegh in Cornwall. He won first prize in the Jugendmusikant national competition and graduated with honors from Nordwestdeutsche Musikakademie, where he was later appointed to the faculty.



VIOLA

MATT MICHELIC

Associate Professor, Lawrence Conservatory of Music

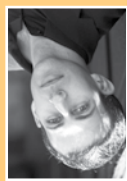
Matthew Michelic enjoys a diverse musical career as a soloist, chamber musician, orchestral player, and teacher. He has concertized throughout the United States and internationally as violist of the Kenwood, Da Vinci, and Delos Quartets, and has recorded on the Orion and CRI labels.



PIANO

BENJAMIN HOCHMAN

Pianist Benjamin Hochman has achieved widespread acclaim for his performances as orchestral soloist, recitalist and chamber musician. He is a graduate of the Curtis Institute of Music and the Mannes College of Music. He has performed with the New York and Israel Philharmonics, the Chicago, Pittsburgh, American and Cincinnati Symphonies



CATHERINE KAUTSKY

Professor and Chair of Keyboard Studies at Lawrence Conservatory of Music

Ms. Kautsky has concertized throughout the United States and abroad as a recitalist, soloist with orchestra, and chamber musician, appearing in venues such as Alice Tully Hall and Carnegie Recital Hall in New York, Jordan Hall and the Gardner Museum in Boston, the Phillips Collection in Washington, D.C., and the Cultural Center in Chicago.



ERIC ZUBER Head International Piano Competition Winner

Eric Zuber is a musician of remarkable emotional intensity and is recognized as one of the leading young American pianists of his generation. Since 2006, Eric has competed in many prestigious international piano competitions, and has been voted to the finals in every single one—a remarkable feat of consistency. A prizewinner in the 2009 Minnesota International Piano-Competition, the 2009 Dublin International Piano Competition, the 2008 Sydney International Piano Competition, the 2008 Seoul International Piano Competition, and winner of the 2007 Hilton Head International Piano Competition, Eric is currently a student at the Juillard School where he is a student of Robert McDonald.

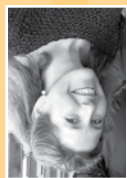


CELLO

JASON DUCKLES Faculty, Connecticut College

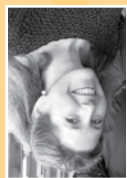
Cellist, Amelia Piano Trio

Jason has received numerous awards for his chamber collaborations, including Grand Prize in the Concert Artists Guild Competition and Top Prize in the Munich ARD International Competition. Jason has also been a member of the Avalon String Quartet and the Aspen Contemporary Ensemble, and has appeared frequently as the cellist for the Mark Morris Dance Group, which tours throughout the United States and Europe. Jason can be heard on the Sony Recording



STEFANIE JACOB Faculty, Wisconsin Conservatory of Music Member, Prometheus Trio.

Stefanie has appeared as soloist with the Boston Pops and the Milwaukee Symphony, and performed on Chicago's nationally broadcast Dame Myra Hess Concert Series.



Matt Haimovitz coaches a student



AMELIA PIANO TRIO Directors, The Amelia Piano Trio

Now in their 10th year, the Trio has an active touring schedule which brings them throughout the country



by the Michigan-Indiana Arts and Sciences Council. He was the recipient of the 2003-2004 "Master Studio Teacher Award" from the Minnesota chapter of the American String Teachers Association and was named "Arts Educator of the Year" Naurburg Award finalist. Mr. Rosenberg is the Coordinator of the String Chamber Music Program at the University of Minnesota.



THOMAS ROSENBERG

Thomas Rosenberg is nationally known as a dynamic performer, chamber music coach, and teacher. Since 1981, he has been Artistic Director of the prestigious Fischoff National Chamber Music Competition in Indiana. In 2004, he was awarded the prestigious McKnight Performing Artist Fellowship Award. He also has received top chamber music prizes at the Munich (Germany), Portsmouth (England) and Chicago Discovery Competitions and is three-time



SCOTT TISDELL

Chamber Music Festival in Steamboat Springs, Colorado. Resident Prometheus Trio and of the Strings in the Mountains of California. The founding cellist of the Wisconsin Conservatory of Music and San Jose Symphony Orchestras in both the Oakland and Tampa areas and was a member of the Florida Orchestra in Tampa and was a member of

Symphony and the Wisconsin Wind Orchestra. Prior to his arrival in Milwaukee, Mr. Tisdell served as Principal Cellist of the Milwaukee Symphony Orchestra. He has appeared as soloist with both ensembles, as well as with the Waukesha Chamber Orchestra and the Associate Principal Cellist of

SAMPLE DAILY SCHEDULE

8:00	Breakfast
9:00 - 10:00	Private practice or private lesson
10:00	Daily all-camp meeting with faculty
10:15-12:00	Ensemble 1 rehearsal and coaching with faculty and guest artists
12:15	Lunch
1:30-3:30	Ensemble 2 rehearsal and coaching
3:30-4:30	Circle of Sound String Orchestra with faculty/pianists' coaching with faculty
- or -	
5:00	Private practice or lesson
Dinner	

EVENING ACTIVITIES INCLUDE:

- » Attendance at concerts by faculty and guest artists
- » Group sightreading sessions
- » "Fancy Food Night" International Dinner cooked by the faculty at the Boston Barn
- » K-Mart Extravaganza



Thrasher Opera House



GREEN LAKE FESTIVAL OF MUSIC

CHAMBER MUSIC CAMP

JULY 2-16, 2010 • AMELIA PIANO TRIO, DIRECTORS



FOR HIGH SCHOOL, COLLEGE, AND GRADUATE STRINGS AND PIANISTS INDIVIDUALLY OR IN PRE-FORMED GROUPS

“Chamber music is the love of my life due to this camp.”

“Attending the GLFM Chamber Music Workshop was possibly the defining moment of my musical life.”

“Anthea and Jason (Camp Directors) have had a huge impact on my life.”

MORE INFORMATION AND APPLICATION AT WWW.GREENLAKECHAMBERMUSICCAMP.COM

This workshop is supported by the Performing Arts Fund of Arts Midwest, funded by the National Endowment for the Arts with additional contributions from General Mills Foundation, Land O'Lakes Foundation, Sprint Corporation, and the Wisconsin Arts Board.